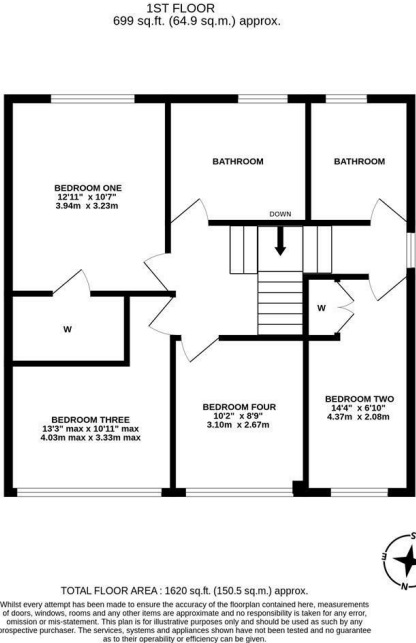
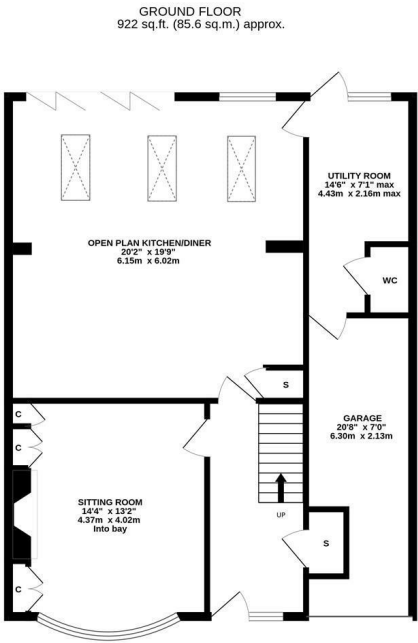




Stylish presentation with a 20ft open plan kitchen diner and a south facing rear garden! This stylish four bedroom semi-detached family home is ideally positioned on Farringdon Road, Cullercoats. Perfectly placed to provide access to local transport links, shops, schools, leisure facilities including Tynemouth Golf Club. Farringdon Road provides excellent accommodation for a growing family.

The accommodation briefly comprises: entrance hall with stairs to first floor and hallway storage cupboard; sitting room with feature wood burning stove and fitted alcove storage; an impressive 20ft open plan kitchen diner with three Velux sky lights, spot lighting, storage cupboard and bi-fold doors leading out to the rear garden, kitchen area with a range of fitted units together with work surfaces, some integrated appliances and breakfasting island; utility room with rear door garden access; downstairs WC; integral garage measuring 20ft. The split level first floor landing gives access to four bedrooms, bedroom one with generous wardrobe storage; shower room; family bathroom complete with four piece suite. Externally, a block paved multi-vehicle driveway to the front, leading to the integral garage with electric roller shutter door access. To the rear, a delightful south facing garden laid to both lawn and paving providing a patio seating area, all enclosed with fenced boundaries. Early viewings are advised to avoid disappointment!

Stylish Semi-Detached Family Home | Four Bedrooms | 1,620 Sq ft (150.5m2) | Sitting Room | Impressive 20ft Open Plan Kitchen Diner | Utility Room | Downstairs WC | Family Bathroom | Shower Room | 20ft Integral Garage | Multi-Vehicle Front Driveway | South Facing Rear Garden | GCH & DG | Great Location | Freehold | Council Tax Band D | EPC: C



Offers Over £425,000

IMPORTANT NOTE: These particulars and the descriptions and measurements herein do not constitute representation and whilst every effort has been made to ensure accuracy, this cannot be guaranteed.

